

# **SiNGOT**

## **INJECTION ACCESSORIES.**

ITEM #

### **PLASTIC PACKERS**

SPP01 5/8" (16mm) with Non return valve and sleeve.



SHPN01 **PLASTIC HAMMER PACKER (includes Grease Nipple)**



### **ECONOMY GREASE NIPPLE PACKERS**

SEN01 13mm x 100mm

SEN02 8mm X 85mm

SEN03 8mm X 100mm



### **GREASE NIPPLE**

SGN01 M6 Thread Size

SGN02 M8 Thread Size



# **SiNGOT**

## **INJECTION ACCESSORIES.**

ITEM #

### **HOOK ON STEEL PACKERS.**

SHP01 17 X 110mm  
SHP02 17 X 150mm  
SHP03 17 X 200mm



\*Made From High Quality steel.

\*Rubber is made from Heavy Duty Reinforced Hose.

### **GREASE NIPPLE STEEL PACKERS**

SSN01 17 X 110mm  
SSN02 17 X 150mm  
SSN03 17 X 200mm



SBH01

### **HOOK ON BUTTON HEAD REPLACEMENT**



\* Includes Spring and Ball

# **SiNGOT**

## **INJECTION ACCESSORIES.**

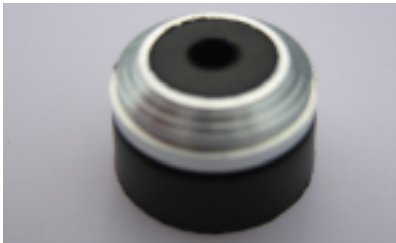
ITEM#

SHOC01 **HOOK ON CONNECTOR + Viton Rubber Nozzle**



\*Designed and tested for a leak free seal

SHVI01 **VITON RUBBER REPLACEMENT FOR HOOK ON CONNECTOR**



SCP01 **HOSE CLAMP (xmas tree style). 30 - 40mm X 8mm Drill Hole.**



SCM01 **HOSE CLAMP (Metal clamp with Screw and wall plug)**



# **SiNGOT**

## **INJECTION ACCESSORIES.**

ITEM#

SHC01 **INJECTION HOSE CONNECTOR**



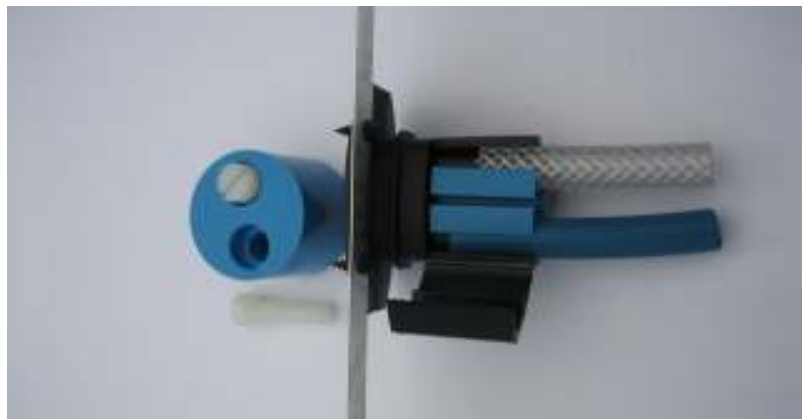
SMSC01 **MONO SHUTTER CONNECTOR (MSC)**



SDSC01 **DUO SHUTTER CONNECTOR (DSC)**



\*Showing complete unit. (Does not include hose)



# **SiNGOT**

## **INJECTION ACCESSORIES.**

ITEM#  
SH01

**SINGOT GROUP INJECTION HOSE**



\*Also available in blue.

EPDM01 **EPDM 30 X 12 Profile**

